

Torre
Diagonal
One



01

02

03

04

05

06

07

ASSET

LOCATION

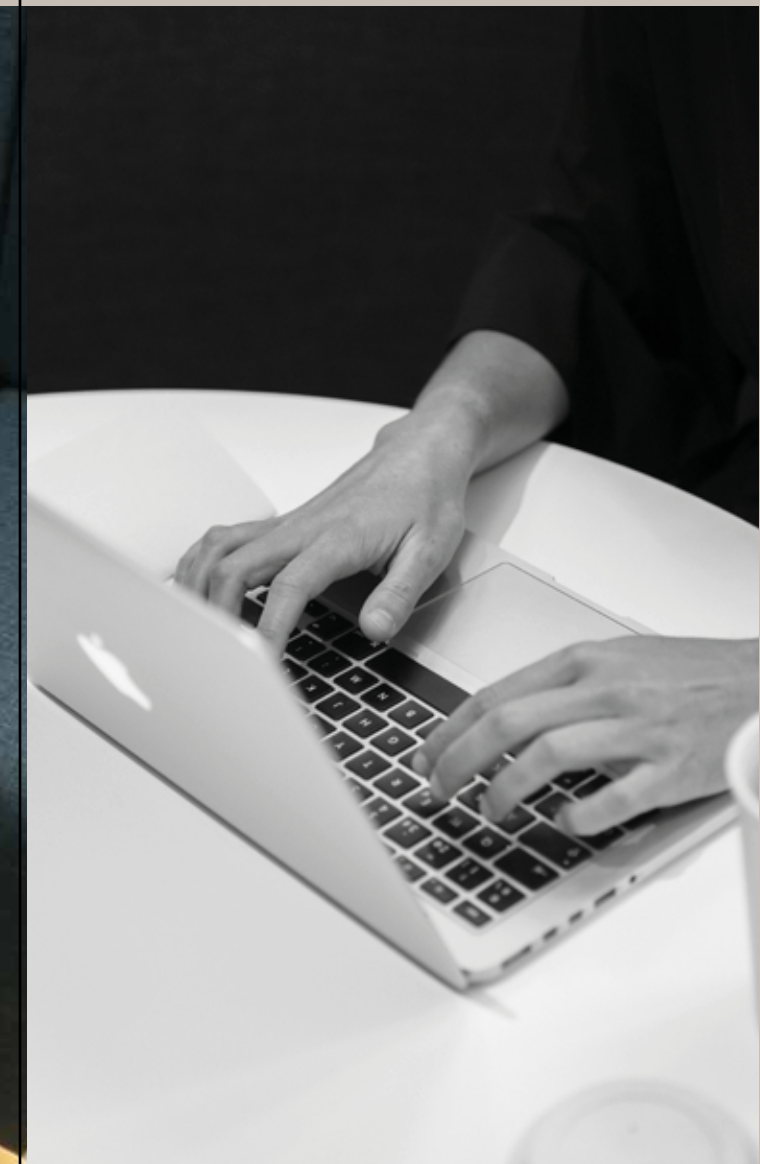
ARCHITECTURE

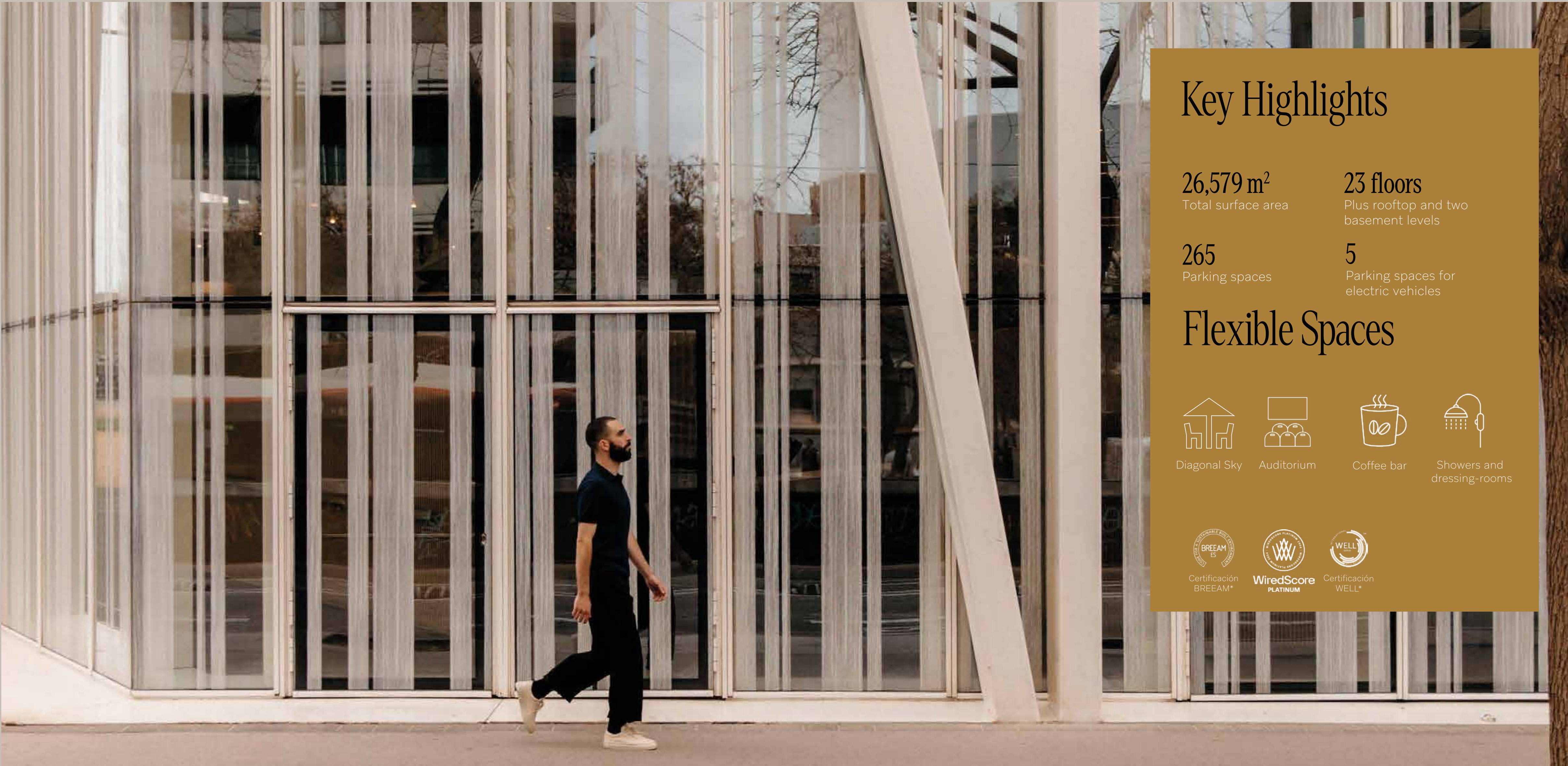
SPACES

COMMITMENT

SERVICES

CONTACT





Key Highlights

26,579 m²
Total surface area

23 floors
Plus rooftop and two basement levels

265
Parking spaces

5
Parking spaces for electric vehicles

Flexible Spaces



Diagonal Sky



Auditorium



Coffee bar



Showers and dressing-rooms



Certificación BREEAM*



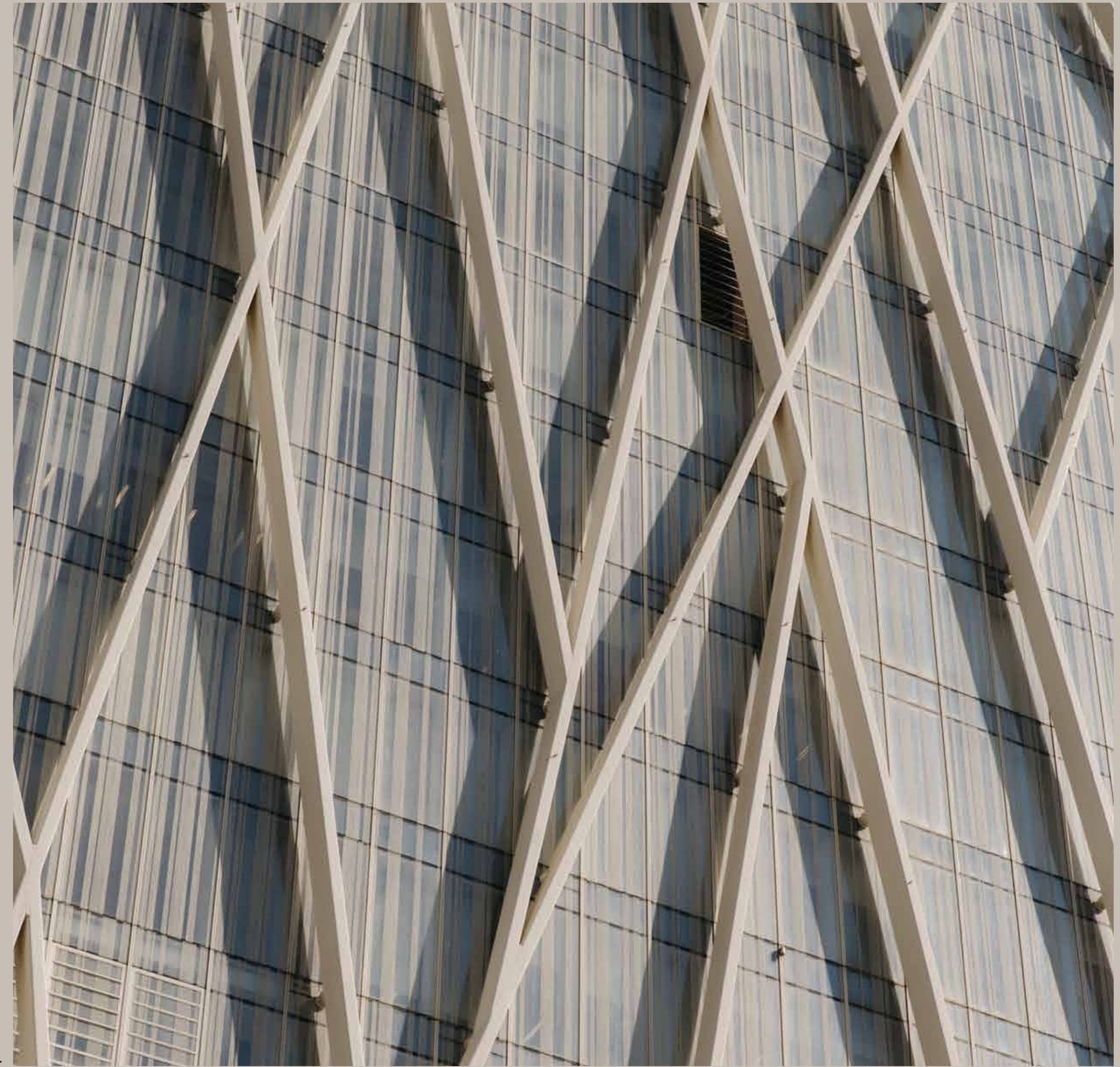
WiredScore PLATINUM



Certificación WELL*

The Asset

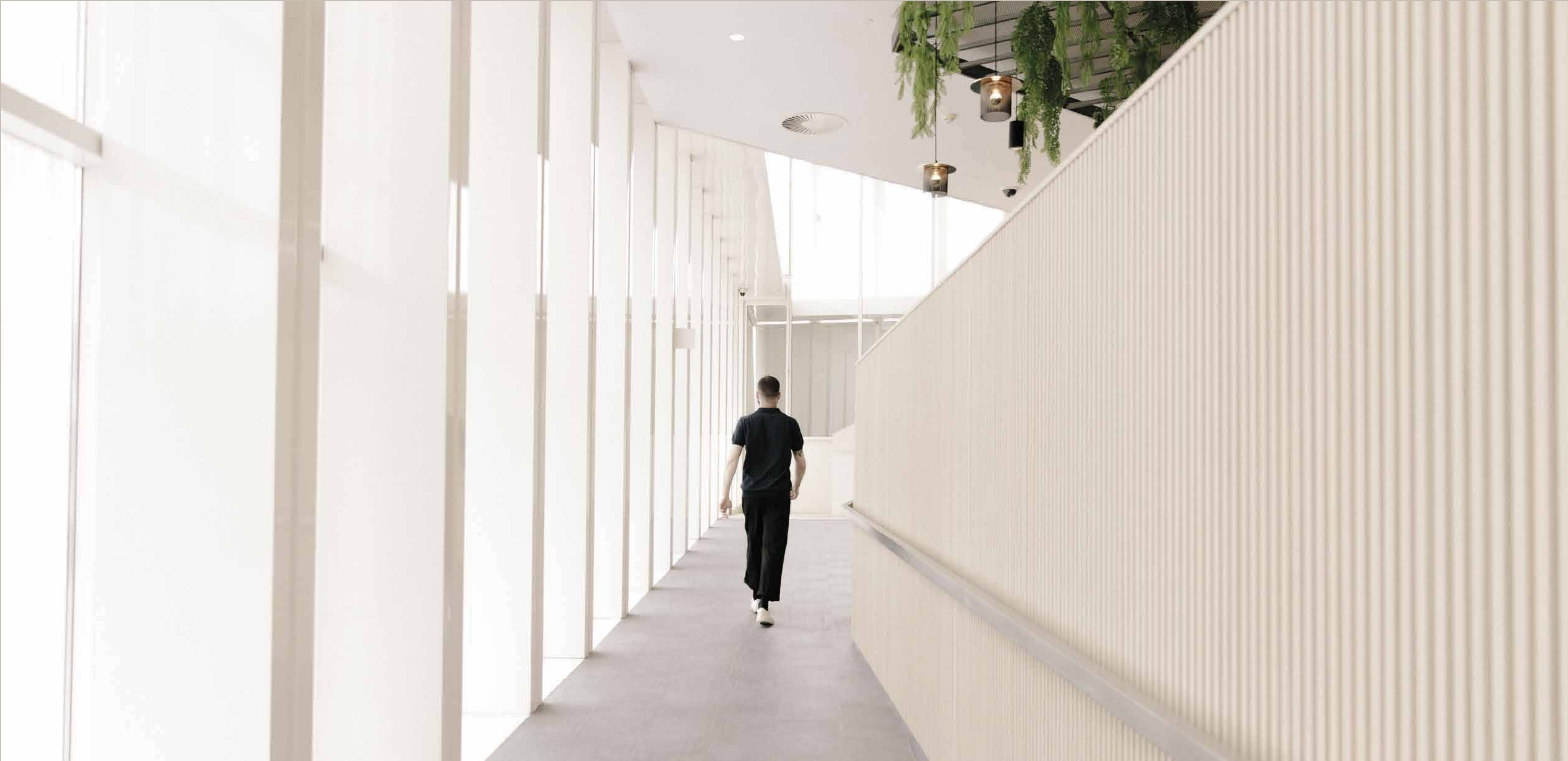
Stepping into Torre Diagonal One is stepping towards a transformative future. **Personal connections** and **ideas** converge on this path to facilitate a journey into modernity and excellence. A modernity that feeds off the history of Barcelona, the city that houses it, expressing its values in a **challenging and cosmopolitan vision**. Injecting your business with a unique personality that brings out all of its potential, relying and building on corporate wellbeing and comfort.



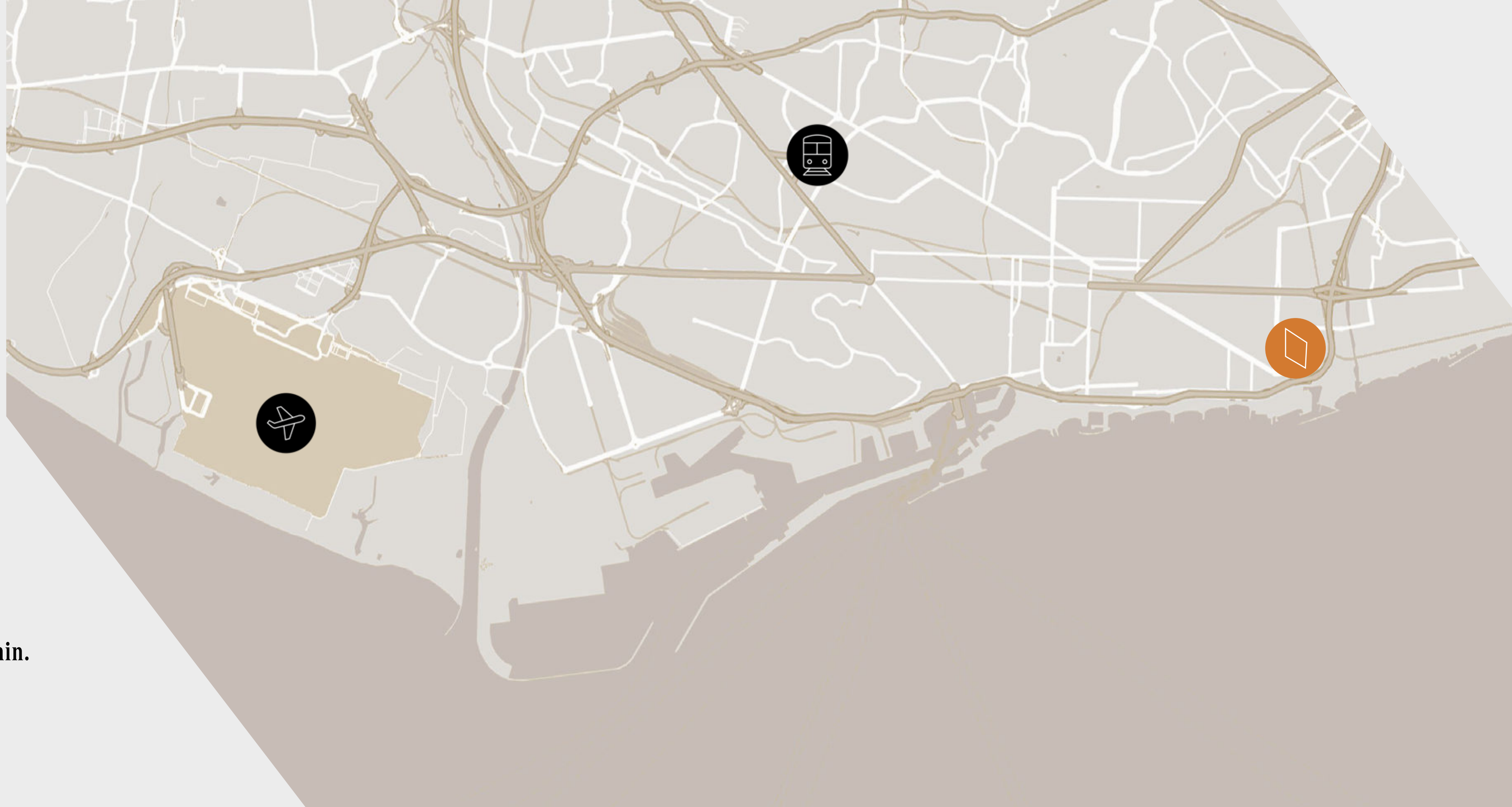
Click on the video player and allow us to introduce you to Torre Diagonal One.

Address

Plaza d'Ernest Lluch i Martin, Barcelona



Location



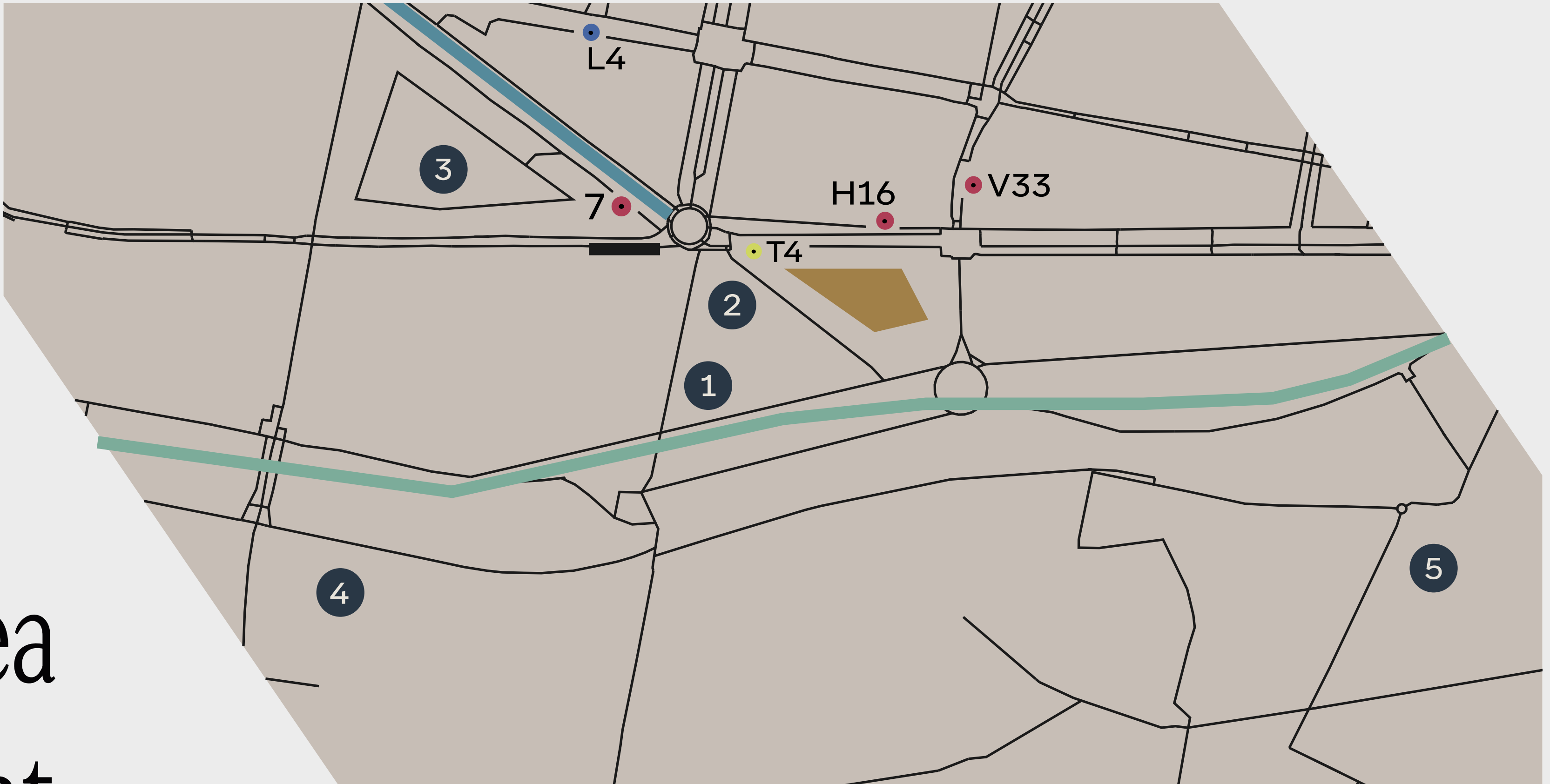
POINTS OF INTEREST

-  Airport Josep Taradellas Barcelona – El Prat. 27 min.
-  Train Station Barcelona Sants. 30 min.
-  Torre Diagonal One.

Location

Located in **district 22@**, Torre Diagonal One enjoys a **privileged position in a district where innovation, creativity, design and technology** all go hand in hand.

A **central, sought-after** area within the public transport network that is also accessible for bicycles and new modes of transport such as the electric scooter. An area that combines every facility with the people's innovative spirit to create a flexible space from which to keep advancing towards the future.



An area in constant evolution

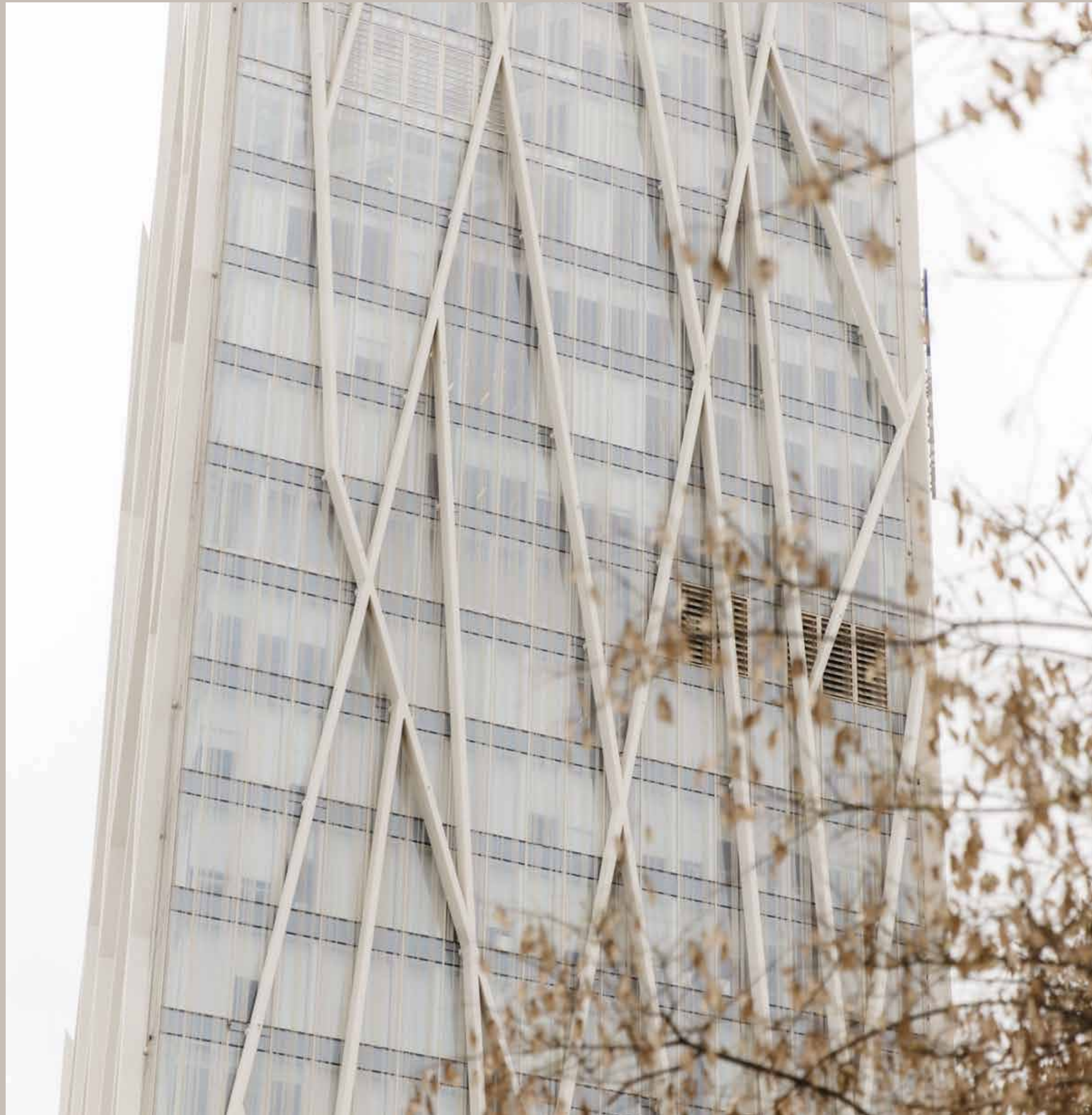
TRANSPORT

- Urban Buses
H16, V33, 7
- Metro
L4. Stop: El Maresme, Fòrum
- Tranvía
T4. Stop: Fòrum
- Taxi Rank

POINTS OF INTEREST

- ① Museo de Ciencias Natruales
- ② Fòrum
- ③ CC Diagonal Mar
- ④ Playa
- ⑤ Port Fòrum

- Avd. Diagonal
- Ronda Litoral



Architecture

Torre Diagonal One is a step ahead, presenting a **unique design that elevates it to the category of architectural work of art.**

A building that plays the fundamental role of inspiring, stimulating change and paving the way to modernity.

A **vanguard technological** space that stands out for its unrivalled sea views and an **inspiring location** that translates into 23 floors reaching 110 metres high, with **spacious offices** in which your business can keep growing towards the future.

23 floors and 110 metres high

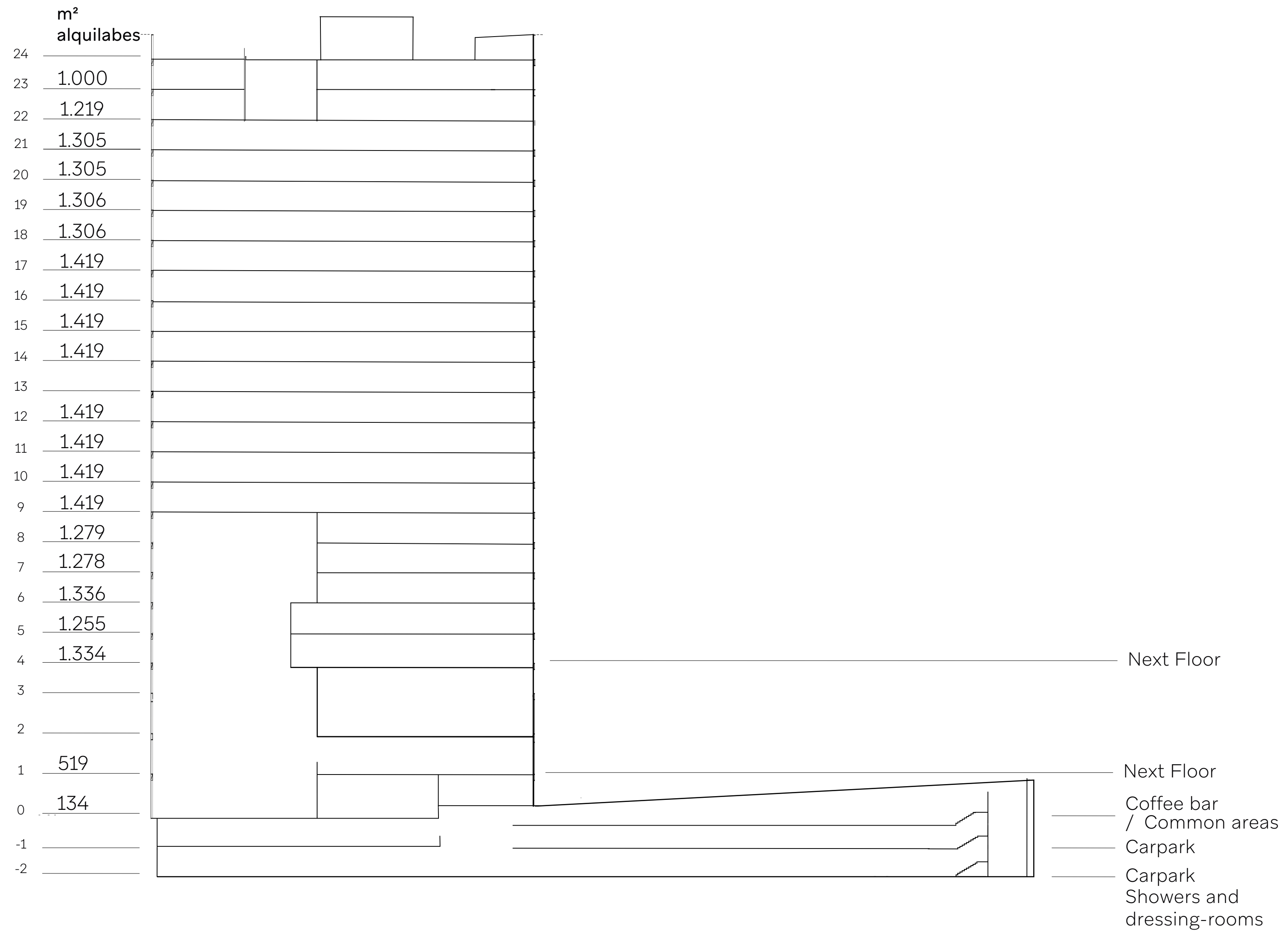


4 Spaces

Torre Diagonal One has been designed with one word in mind: **commitment**. Commitment to achieving the **maximum satisfaction of each company**. To do so, we know that offices are key to building a company culture. Which is why all spaces we make available to you are made up of **diaphanous surfaces filled with spectacular light and views** that are totally **adaptable** to your business needs.

Surface space

The space your company needs



Spaces



OPEN PLAN PROPOSAL

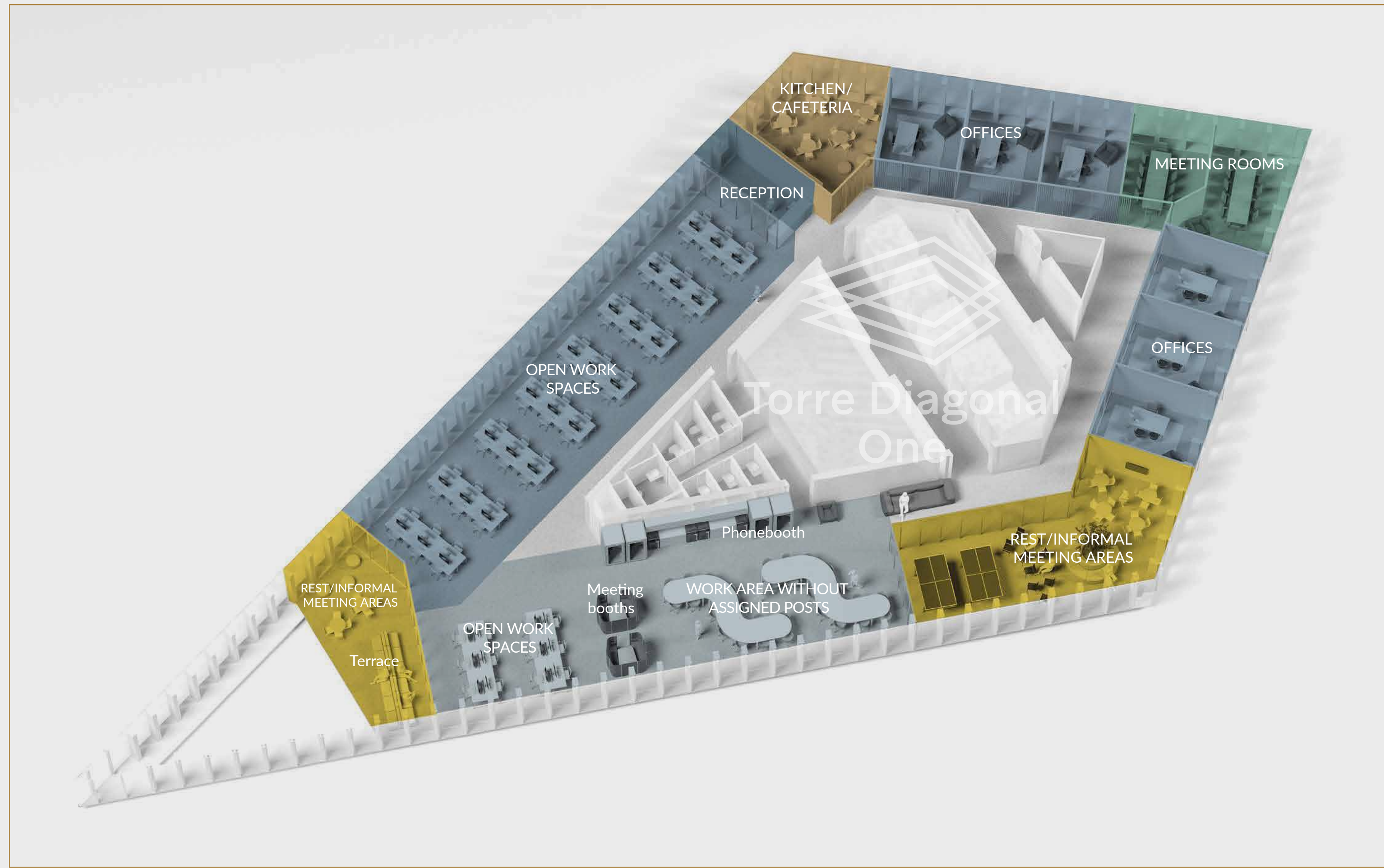
- 84 Fixed posts
- 6 Offices
- 20 Meeting room places
- 2 Reception posts
- 20 Floating posts
- 4 Informal meeting places

Spaces

OPEN PLAN PROPOSAL



Spaces

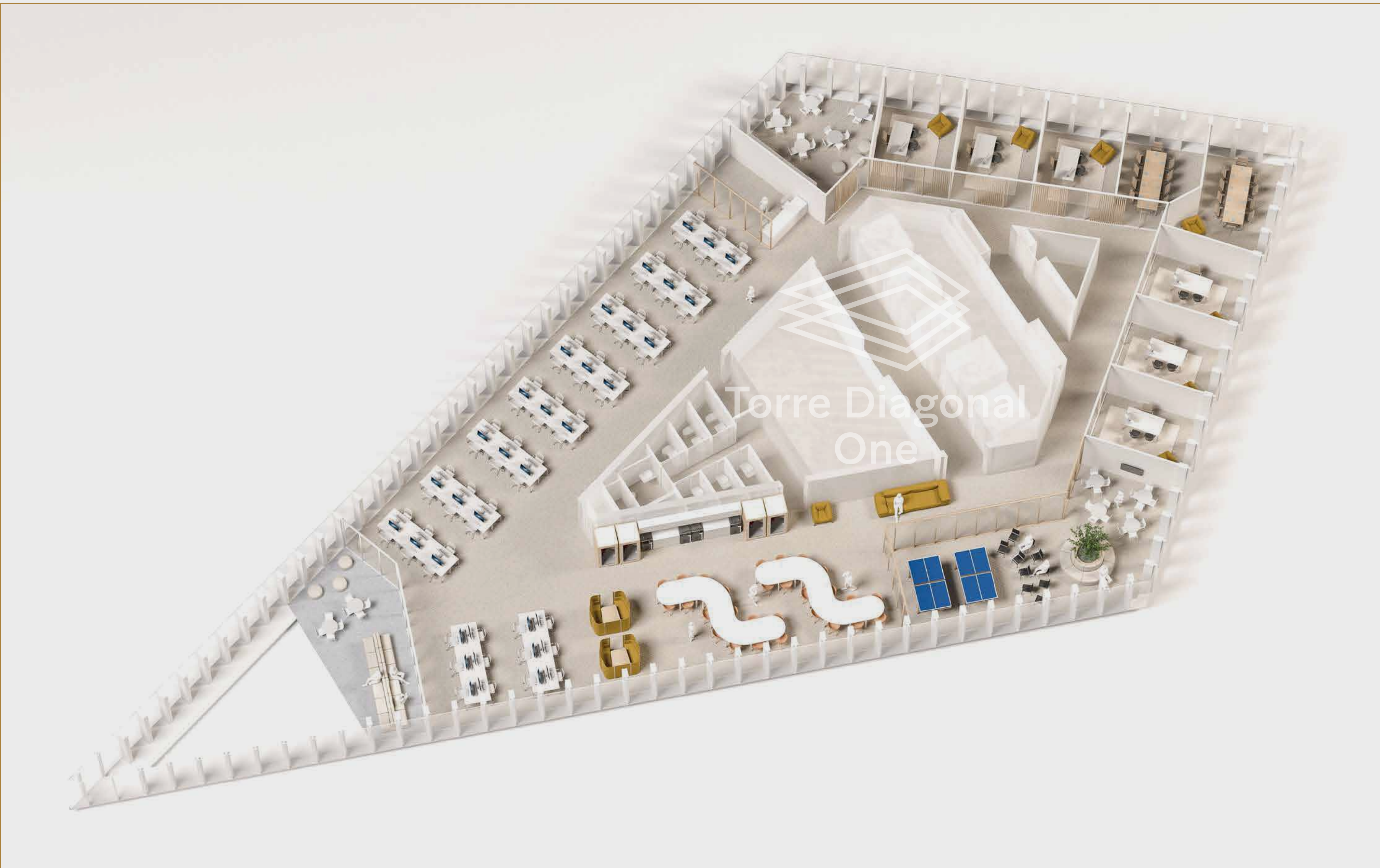


SOCIAL PLAN PROPOSAL

- 60 Fixed posts
- 6 Offices
- 20 Projection / multipurpose room posts
- 2 Reception posts
- 28 Floating posts
- 4 Informal meeting posts

Spaces

SOCIAL PLAN PROPOSAL





Commitment

Torre Diagonal One has been specially designed with the sustainability, management and quality of life of its residents, visitors and neighbours in mind, patent in our collaboration with the government offices to foster employment and the revitalisation of the area.



Certificación
BREEAM*

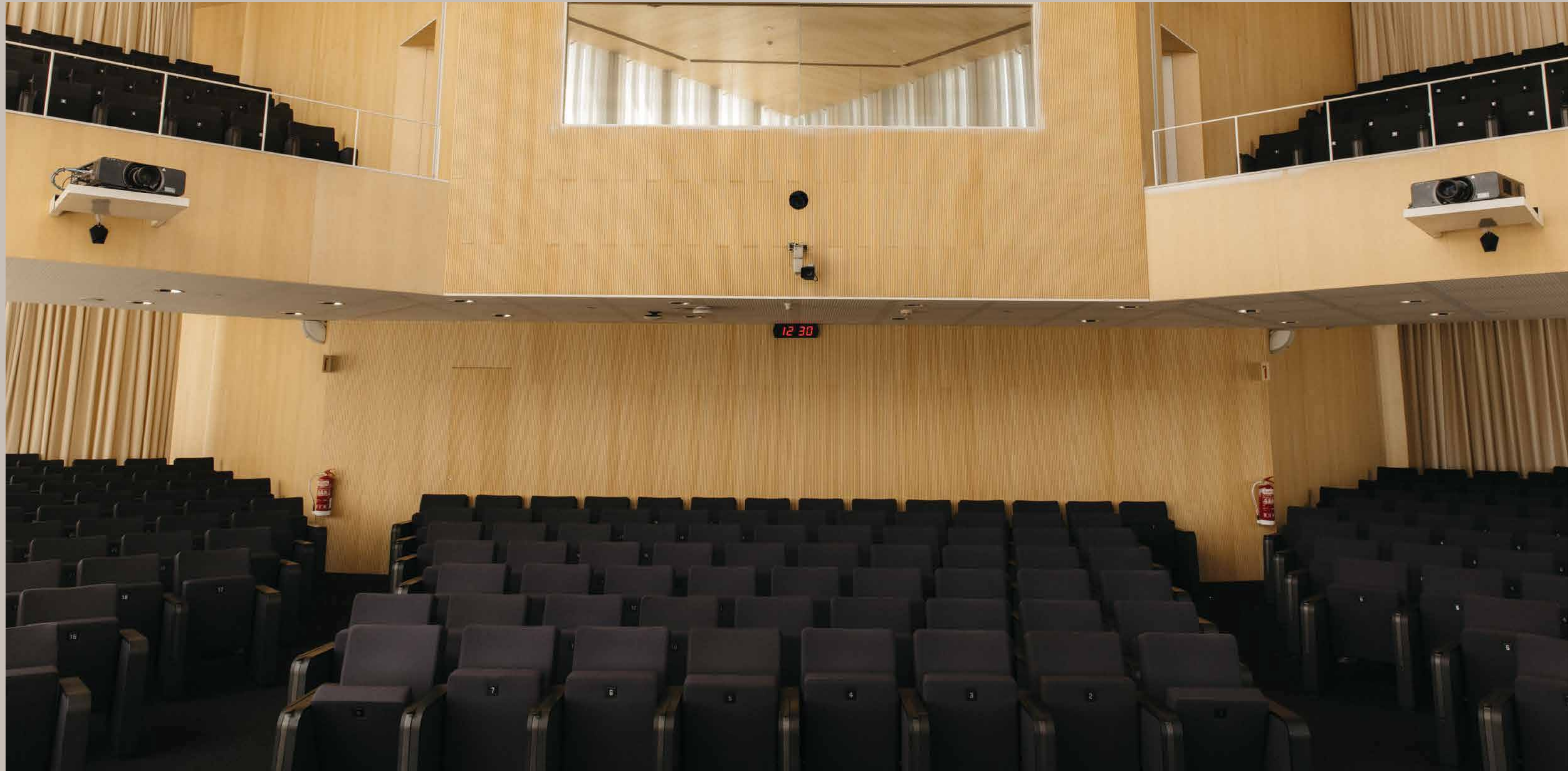


WiredScore
PLATINUM



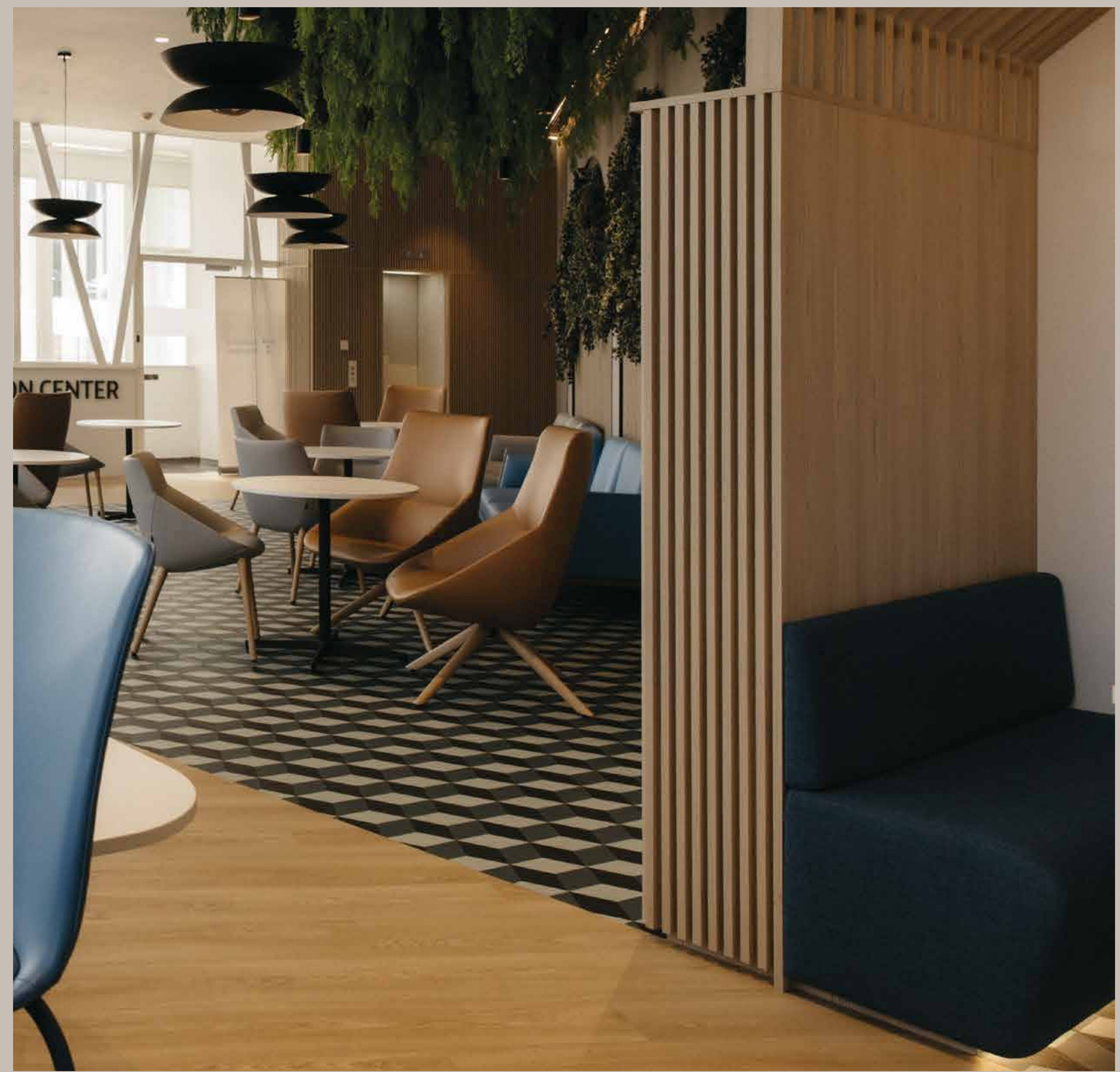
Certificación
WELL*

 <p data-bbox="649 675 833 797">Energy efficiency</p> <p data-bbox="533 928 949 1059">The tower's energy rating is A, meaning its consumption is 65% lower than other buildings of similar characteristics.</p>	 <p data-bbox="1049 637 1366 825">Water management and usage efficiency</p> <p data-bbox="999 928 1416 1022">We use technologies specifically designed to significantly reduce water consumption.</p>	 <p data-bbox="1499 675 1849 731">Waste management</p> <p data-bbox="1482 928 1865 1059">We use a system that separates waste, making high levels of reuse, recycling and responsible disposal possible.</p>	 <p data-bbox="2032 703 2215 759">Transport</p> <p data-bbox="1915 928 2349 1153">Located in an area with an unbeatable array of public transport options, we offer you the possibility of using and recharging electric cars, in addition to a bicycle and scooter parking and recharging zone.</p>	 <p data-bbox="2482 665 2698 797">Health and wellbeing</p> <p data-bbox="2382 928 2798 1125">The tower's lighting and noise levels are constantly monitored and adapted to ensure the utmost quality standards and foster maximum productivity among our employees.</p>
---	---	--	--	---



Services

Torre Diagonal One speaks an inclusive language. Which is why we offer you personalised attention through a wide range of services. All aimed at helping and accompanying your company's continuous growth.





CARPARK

Parking spaces for cars, electric chargers and racks for electric scooters and bicycles make the Torre Diagonal One carpark a great added value for all companies, employees and visitors using their private vehicle. Facilitating whatever form of transport the tower's clients choose.



DINING

A dining zone offering a wide and varied selection of eating options for any time of the day. Additionally, an a la carte catering service is available to satisfy any corporate need.



AUDITORIUM AND MULTIPURPOSE ROOMS

An ideal space for all sorts of events. An auditorium fitted with the latest audiovisual technologies and a capacity for up to 337 people, distributed between the main floor and two amphitheatres. An adaptable space adding a touch of modernity to any event your company might need, from product presentations, talks, lectures, to film screenings.



DIAGONAL SKY

At 110 meters and overlooking the sea, our tower has just inaugurated a sustainable rooftop. A perfect rooftop to hold different types of events such as exhibitions, press conferences, celebrations, etc., or simply to go up, relax and let your creativity fly.



DRESSING-ROOM AND SHOWERS

Dressing-room fitted with showers to promote healthy living, making exercise perfectly compatible with the pace of everyday life.



INTRANET

A portal created to keep internal users and companies informed, making them feel at home. A digital personal area from which to stay abreast of the latest news in the tower and discover all the services on offer without leaving the building.



SMART LOCKERS

You can now pick up, send or return your parcels through our smart lockers.



BICYCLE AND SCOOTER PARKING RACKS

However you choose to get around, you'll enjoy complete comfort. Use the bicycle and scooter parking and charging rack.



NUTRITIONIST



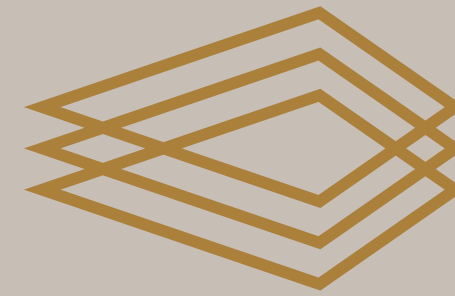
ELECTRIC CHARGERS

Our tower is committed to sustainable mobility, which is why we have installed 16 charging points for electric vehicles that you can use whenever you need them.

GYM, PHYSIOTHERAPIST AND MULTIDISCIPLINARY ROOMS FOR LEISURE AND EVENTS COMING SOON.

The future
starts here





Torre Diagonal One

-  *650 167 762*
-  *www.torrediagonalone.com*
-  *info@torrediagonalone.com*
-  *@torrediagonalone*
-  *Torre Diagonal One*

Commercial agents:

