



NEE NEXT FLOOR

01

02

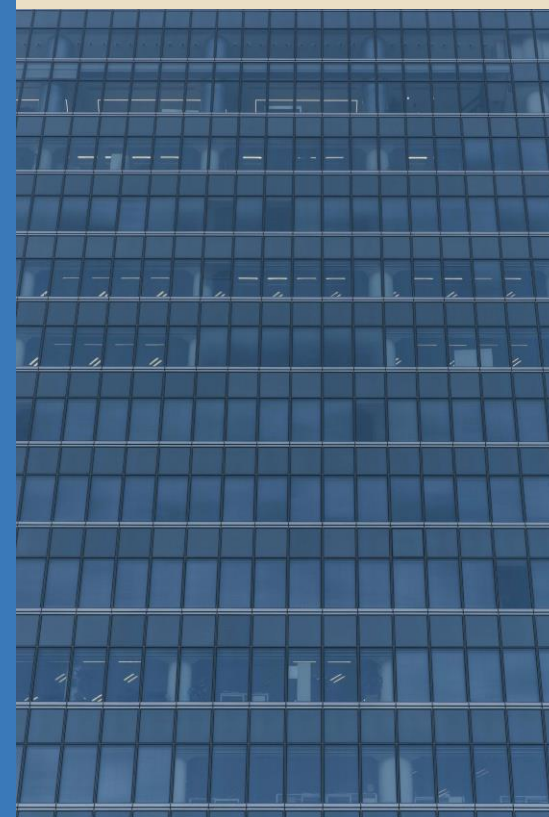
03

04

05

06

07



**What is
Next Floor**

Spaces

Plans

Services

Architecture

Sustainability

Location



What is Next Floor

Located in the cities of **Madrid and Barcelona** and within the emblematic **Torre Emperador Castellana and Torre Diagonal One**, Next Floor is a concept of flexible spaces that ensure maximum adaptability and comfort to meet any need.

What makes us unique?

- **Prime location**
- **Multiple transport connections**
- **Unmatched surroundings**
- **A wide range of services**
- **Natural light**
- **Panoramic views**

Enjoy the road to the future. See you in the tower.
What's Next?

[Click here to see the presentation video](#)



Spaces

Next Floor boasts a **space equipped with the utmost comfort and state-of-the-art technologies** to enable you to achieve your fullest personal and professional development.

Enjoy the **personalised management of the flexible spaces by our space manager** and let yourself be inspired by our vast common areas, our views and the quality of our furniture, which ensures maximum adaptability and comfort.



PRIVATE OFFICES

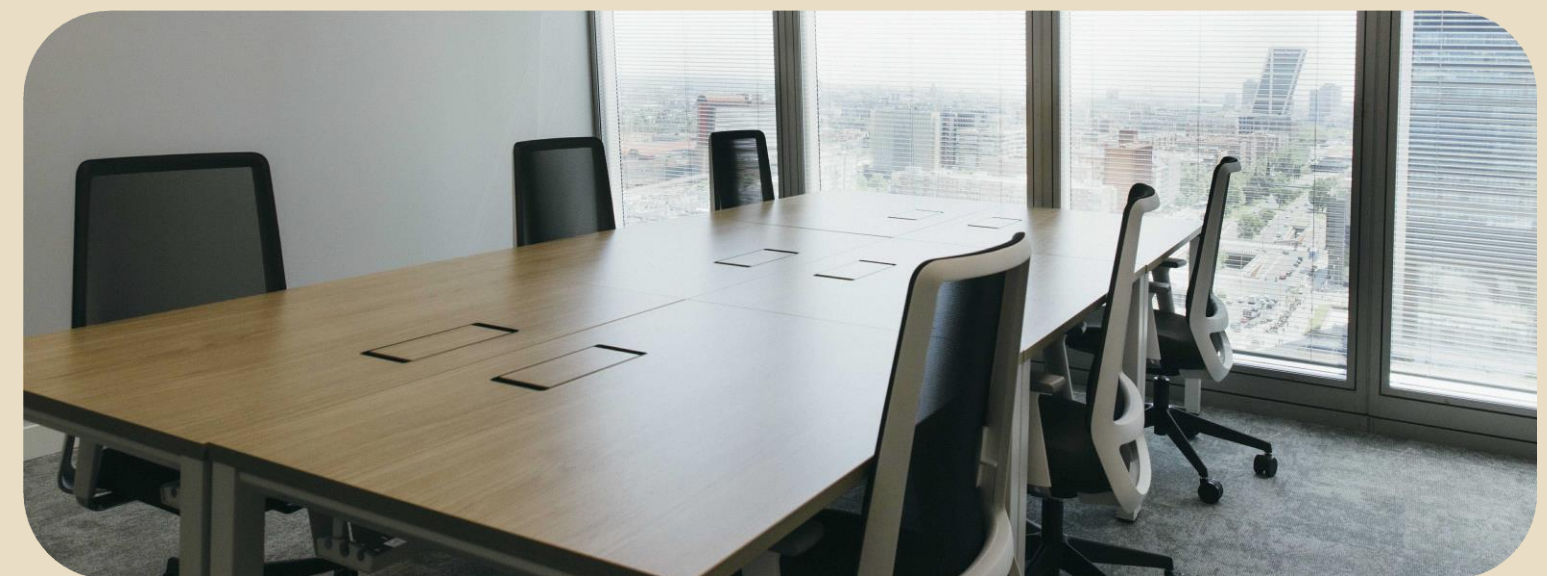
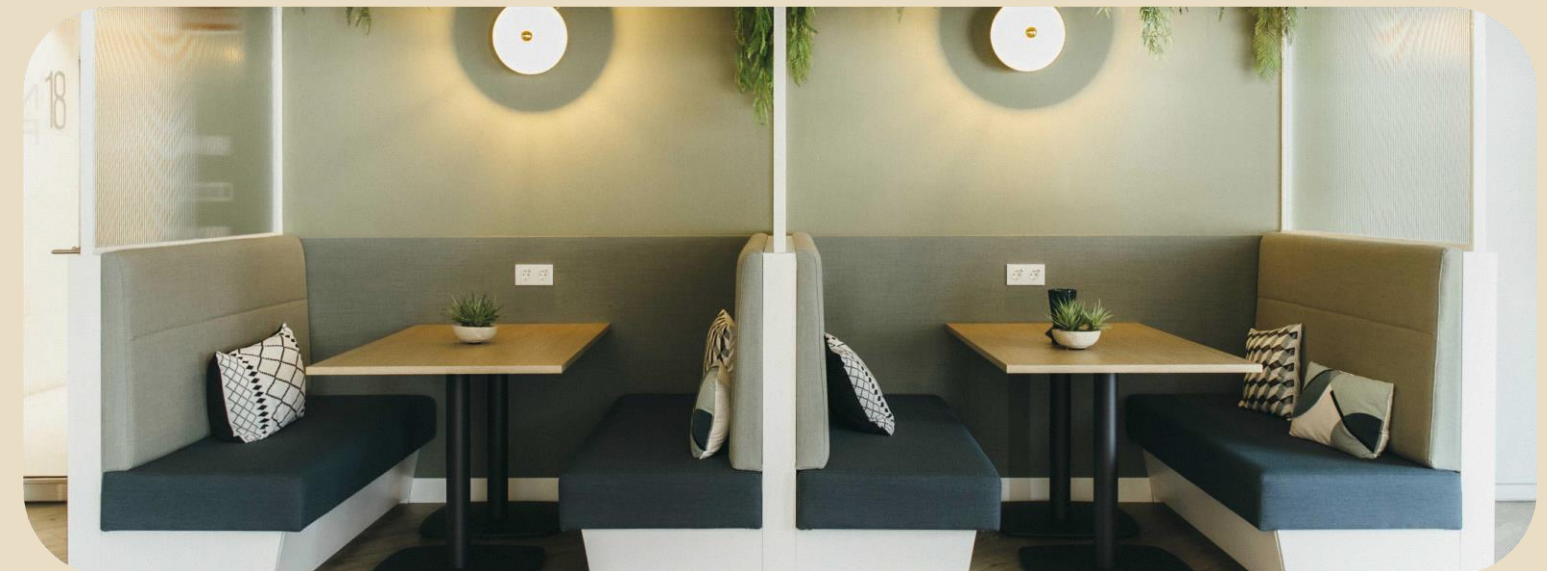
Organise and set up your meetings by choosing from our wide range of **fully equipped, quiet and soundproofed offices.**

Choose your flexible plan for **five days per month for €100/month + VAT, or the full flexible plan for €250/month per station + VAT.**

From €100/month/workstation

*Does not include domicile for tax purposes.

- Private office equipped with ergonomic furniture
- Wi-Fi
- 24/7 access
- 24/7 security
- Cleaning service
- Access to meeting rooms*
- Phone booths
- Tax domicile
- Reception of visitors
- Receipt of post and parcels
- Exclusive discounts on event rooms
- Access to Torre Emperador's intranet

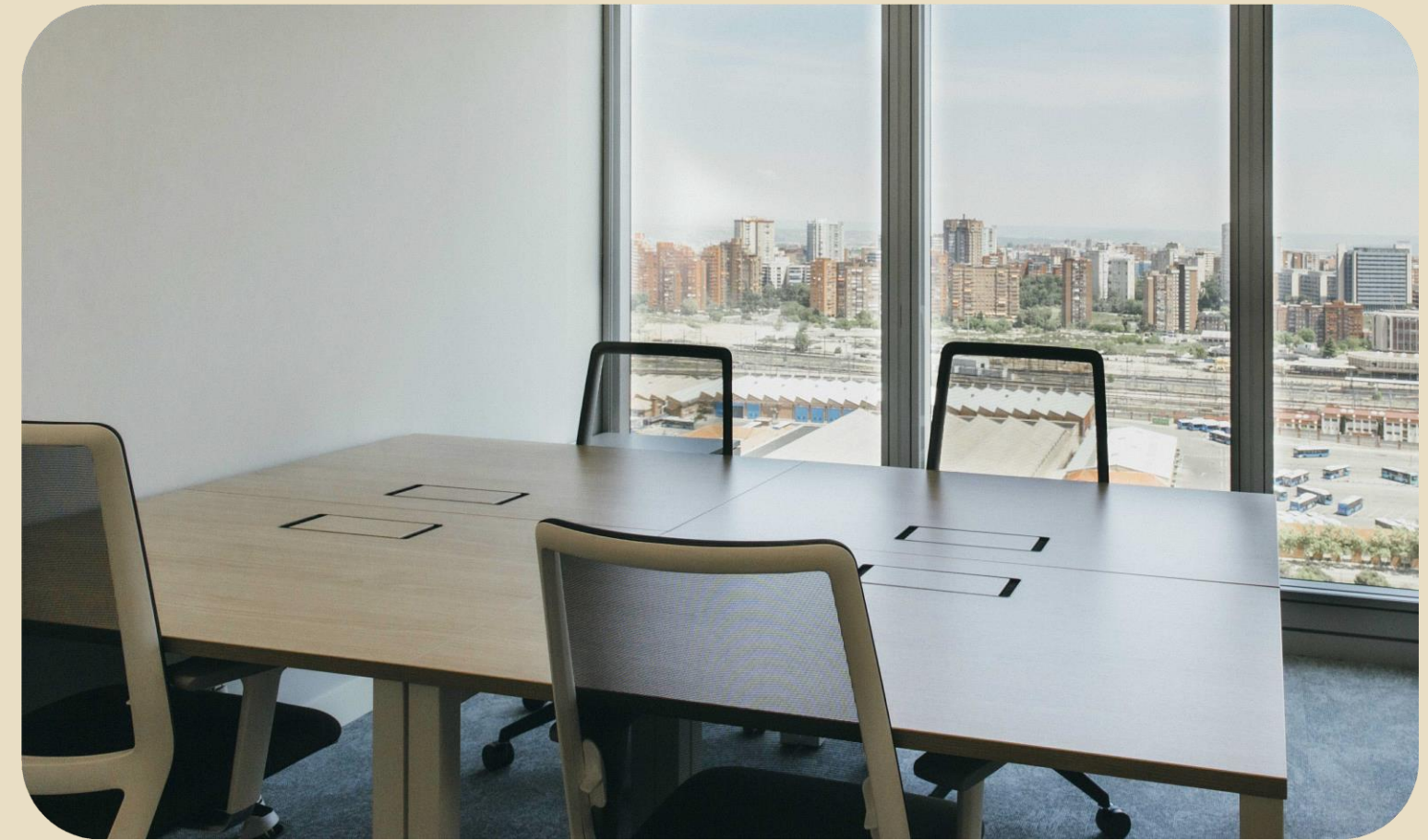


FIXED WORKSTATION

Experience **fixed workstations in shared offices.** They are equipped with ergonomically designed furniture for an optimised and comfortable professional experience.

From €400/month/workstation

- Fixed workstation equipped with ergonomic furniture in a shared office
- Wi-Fi
- 24/7 access
- 24/7 security
- Cleaning service
- Access to meeting rooms*
- Phone booths
- Tax domicile
- Reception of visitors
- Receipt of post and parcels
- Exclusive discounts on event rooms
- Access to Torre Emperador's intranet



FLEXIBLE WORKSTATION

The spaciousness and brightness of the flexible workstations make them the perfect place to work. Cosy and modern, enjoy the **high quality of its materials and its practical design in one of two modalities.**

From €250/month/workstation

- Flexible station in common area
- Wi-Fi
- Access during opening hours
- 24/7 security
- Cleaning service
- Access to meeting rooms*
- Phone booths
- Tax domicile
- Reception of visitors
- Receipt of post and parcels
- Exclusive discounts on event rooms
- Access to Torre Emperador's intranet



VIRTUAL OFFICE

Enjoy the advantages of a **flexible and individual workstation in the common area**, with all Next Floor services at your disposal.

Sign up for establishing your tax domicile at a premium location.

From €70/month/workstation

- Flexible station in common area (1 day a month)
- Wi-Fi
- Access during opening hours
- 24/7 security
- Cleaning service
- Access to meeting rooms*
- Phone booths
- Reception of visitors
- Receipt of post and parcels
- Exclusive discounts on event rooms
- Access to Torre Emperador's intranet



Rooms Next Floor

ÁGORA ROOM

- Capacity for up to 24 people.
- 86" touch screen, room remote control and state-of-the-art audiovisual equipment.
- Catering service available.



PROGRESS ROOM

- Capacity for up to six people
- 55" screen with HDMI and wireless connections, sound bar and state-of-the-art audio-visual equipment
- Catering service available



IMPROVE ROOM

- Capacity for 16 to 46 people.
- 86" screen with HDMI and wireless connections, sound bar and state-of-the-art audio-visual equipment
- Catering service available



SHARE ROOM

- Capacity for 12 to 46 people.
- 55" screen with HDMI and wireless connections, sound bar and state-of-the-art audio-visual equipment
- Catering service available



DEVELOP ROOM

- Capacity for 18 to 46 people.
- 86" screen with HDMI and wireless connections, sound bar and state-of-the-art audio-visual equipment
- Catering service available



COMMON AREAS

Vending services, office area, kitchen, sofas and relaxation zone, among others, so that your daily life in Next Floor is pleasant and comfortable.



Plans

Virtual Office From €70/month

Flexible workstation From €100/month

Fixed workstations From €400/month

Private Offices From €450/month per workstation





All the services your business needs

Make yourself at home working at Next Floor.
Choose your workspaces and enjoy the personalised management of our Space Manager to optimally organise your use of the facilities and benefit from all the services Next Floor has to offer.



Next Floor Services



WIFI



OPEN 24H



MEETING
ROOMS



RECEPTION



FURNISHED



ROOM
FOR EVENTS



PROFESSIONAL
PRINTERS



CLEANING



REST AREA



CATERING



LOCKERS



LIFTS

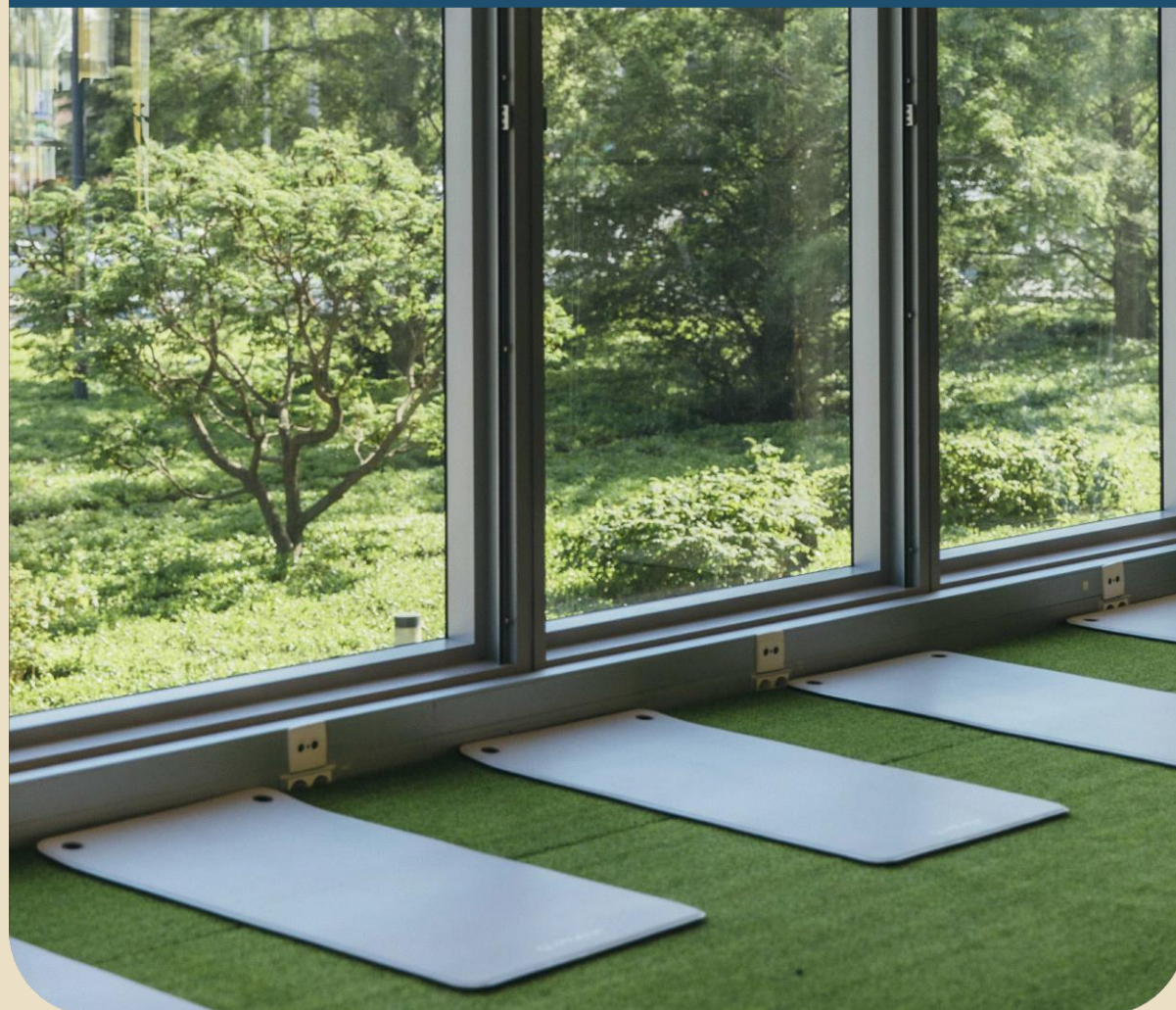
Other Services

In addition, you have access to all the exclusive services of Torre Emperador Castellana.



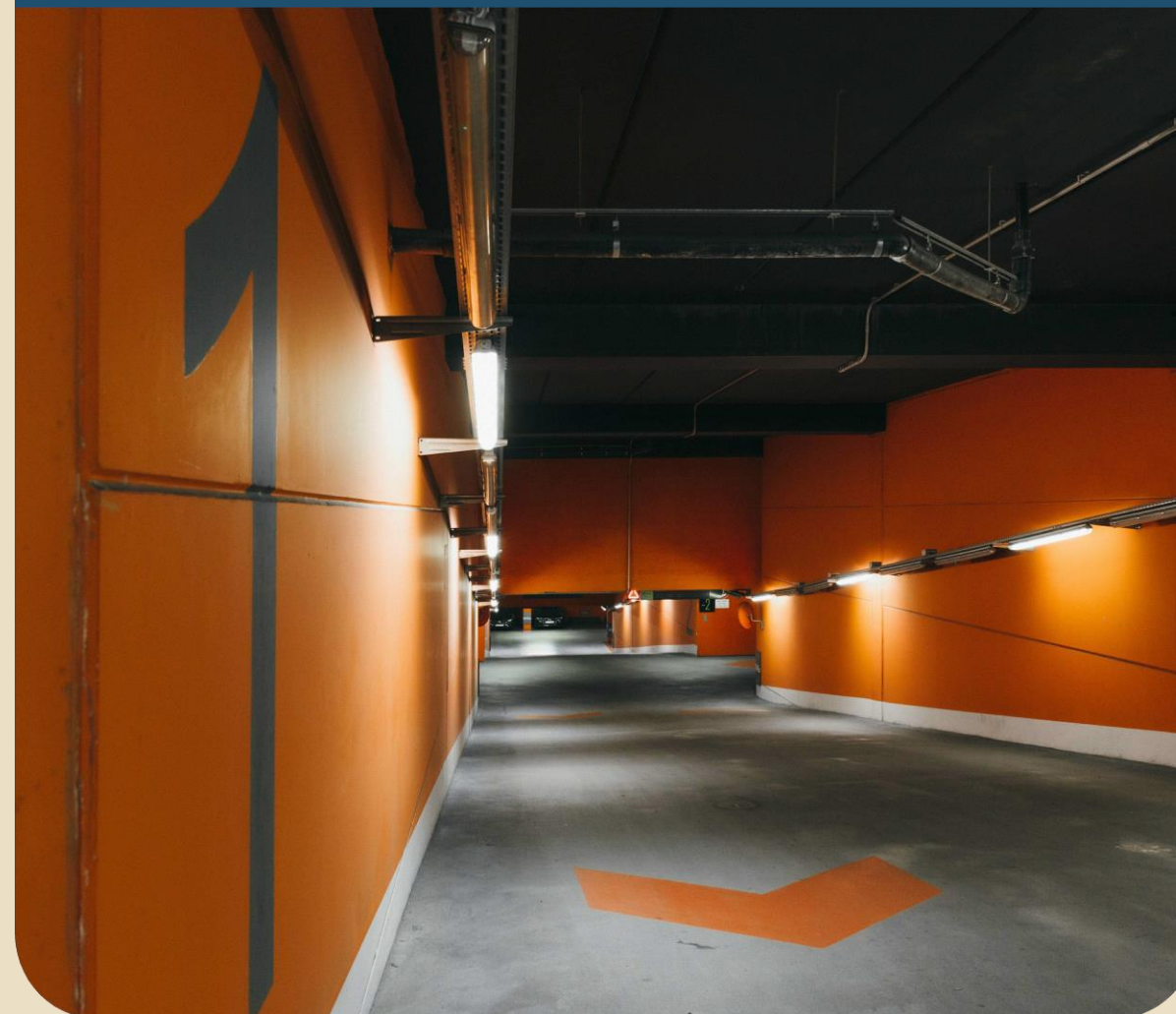
METROPOLITAN SPORT CLUB GYMNASIUM

A modern gym with more than 100 monthly group activities, in addition to virtual activities and access to the network of Metropolitan facilities throughout Spain.



PARKING

1,270 parking spaces and electric chargers make our car park an added value for all private vehicle users.



FOOD & DRINK

Our restaurant area offers you tailor-made catering services, as well as a corner on the ground floor, a canteen on the second floor and the Michelin-starred Élkar restaurant on the 33rd floor. We offer a wide and varied range of culinary options for any time of the day.



POST AND PARCEL SERVICES

A service managed directly by us that allows us to ensure total security and **hand delivery of each user's mail, courier and parcels.**



BEAUTY AND WELLNESS

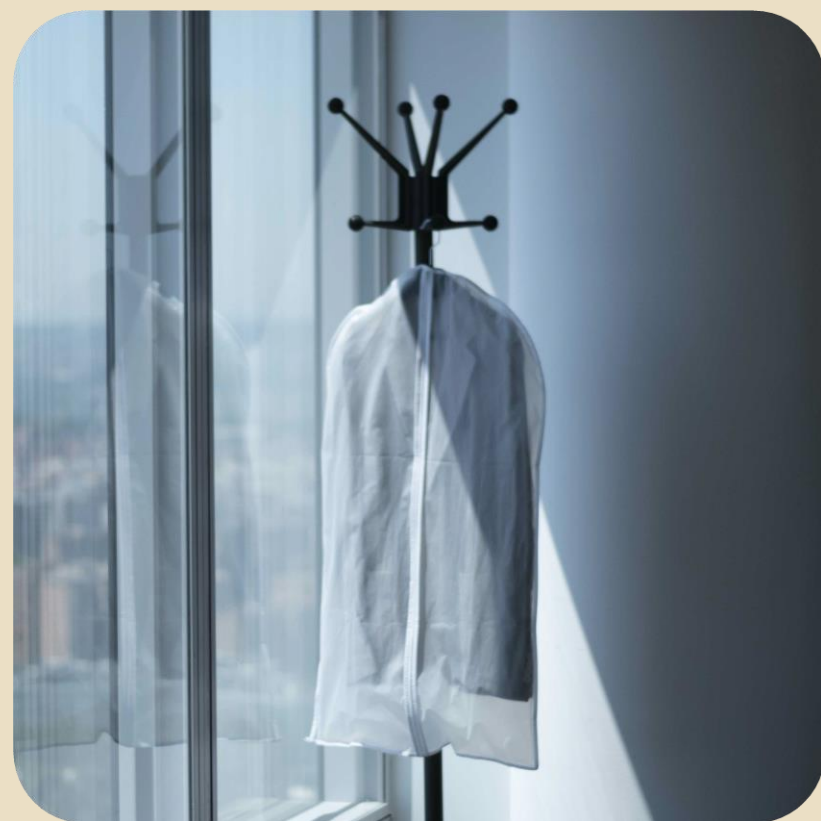
Hairdressing and beauty salon, physiotherapy and nutrition service to further our commitment to the well-being of all our customers.



INTRANET

A digital communication platform that will keep you up to date with all the tower news and provide information on all the services you can enjoy without even leaving the building.





DRY CLEANING AND LAUNDRY



CAR CLEANING



ATMs



COBBLER



HANDYMAN

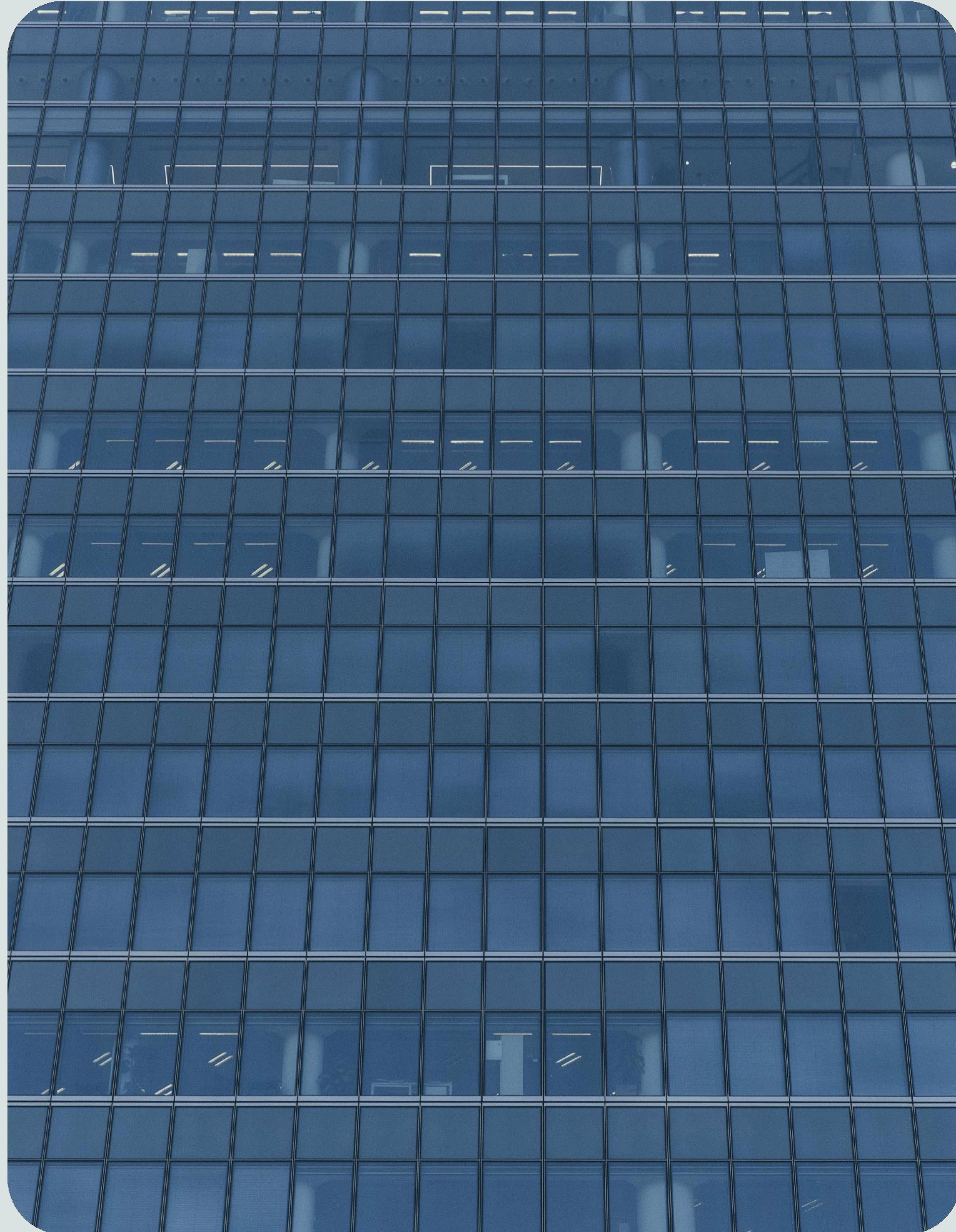


PHARMACY DELIVERY



TRAVEL AGENCY

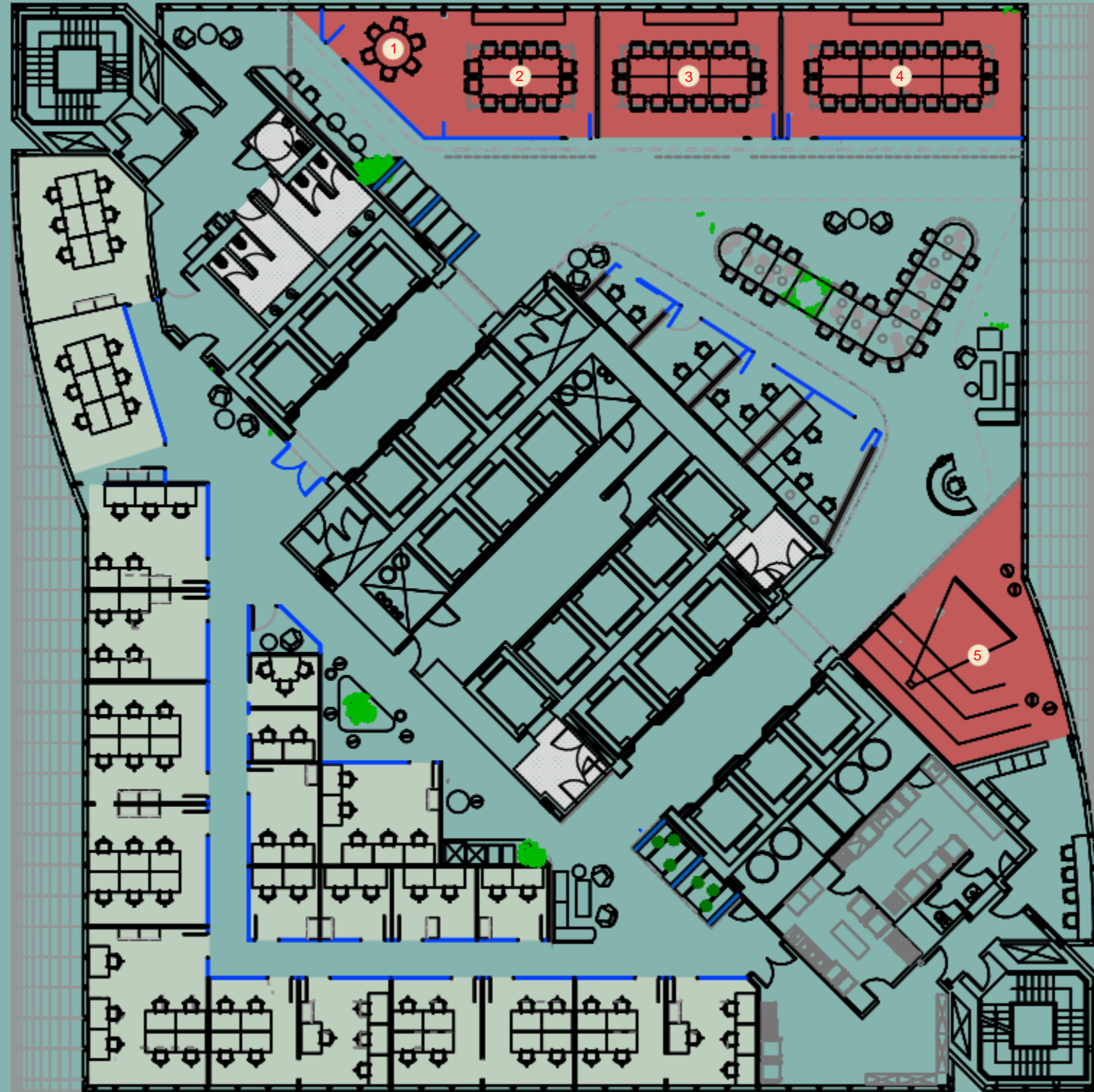




Architecture

Next Floor Madrid stands out as an **outstanding space** in a **central and strategic location** where natural light combines with prime views of the city of Madrid.

Enjoy the highest quality finishes and features with a **wide range of meeting rooms and independent offices** that will perfectly suit the needs of your business.



Diagram

PRIVATE ROOMS

- 1 Progress Room
- 2 Share Room
- 3 Improve Room
- 4 Develop Room
- 5 Ágora Room

● PRIVATE OFFICES





Sustainability

Next Floor offers you the highest quality working environment in the heart of Madrid. A space that places a premium on the utmost well-being for both the planet and for people.

And it is thanks to this commitment that we are the **first co-working with the WELL Certification**, in which health and well-being are paramount, and the **double rating of “Excellent” and “Exceptional” in the BREEAM® ES certificate in Torre Emperador Castellana**. Certificate that rates buildings’ systems, management practices and sustainable design.

A powerful marketing tool to showcase your company's social and environmental commitment.





Location

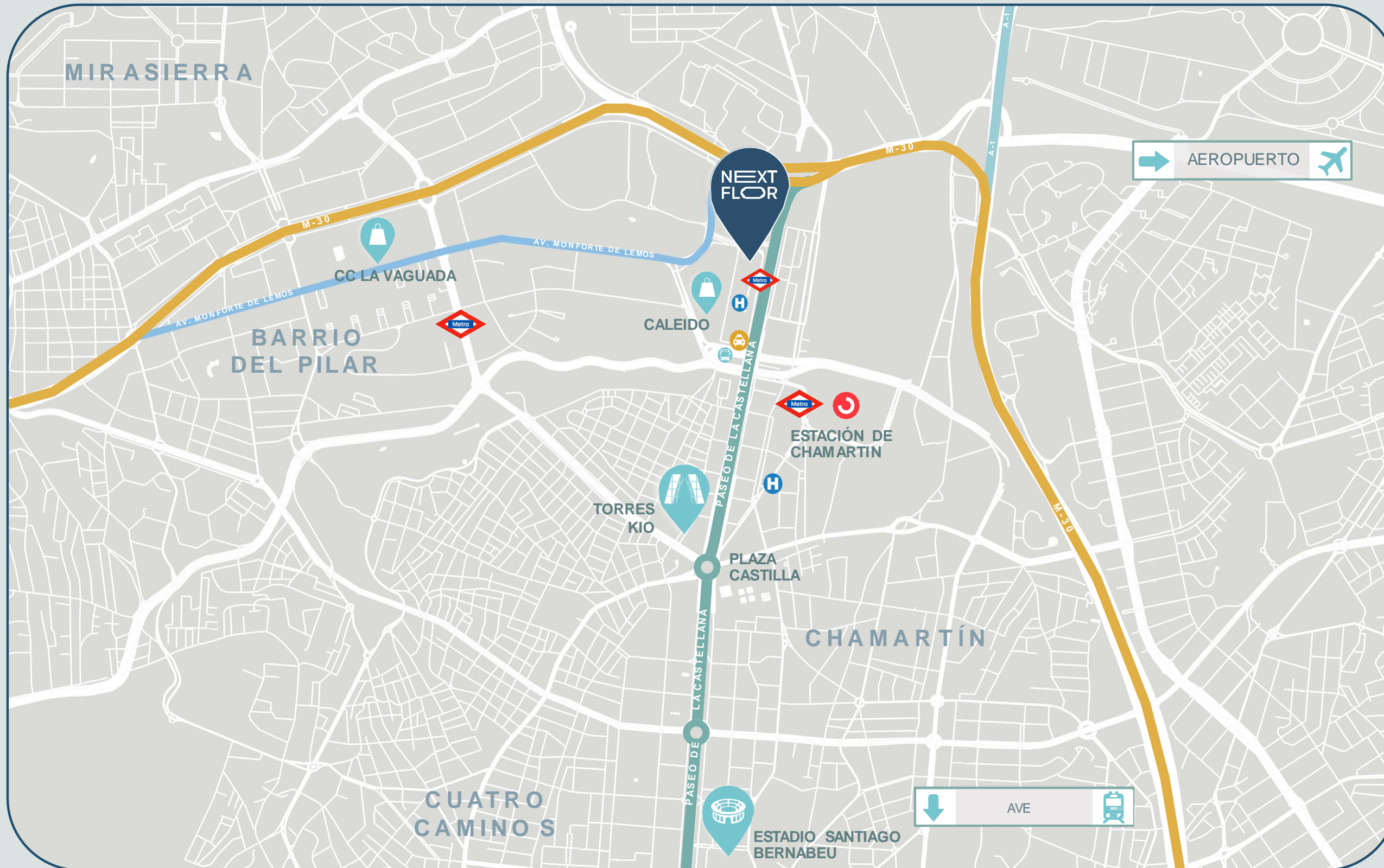
Located in the central Paseo de la Castellana and on the 18th floor of Torre Emperador Castellana, Next Floor Madrid is situated in an area that combines the best facilities, natural light and unbeatable public and private transport.

ADDRESS

Paseo de la Castellana 259D, 28046 Madrid.



Where are we?



TRANSPORT

-  Metro
 - Begoña (Línea 10)
 - Chamartín (Líneas 1 and 10)
 - Barrio del Pilar (Línea 9)
 - Plaza de Castilla (Líneas 1, 9 and 10)
-  Commuter trains
 - Chamartín station (4 MIN BY CAR)
-  City buses
 - 67, 124, 134, 135
-  Taxi
-  Paseo de la Castellana
-  M-30
-  Avenida Monforte de Lemos
-  A-1
-  Adolfo Suárez Madrid Barajas Airport (15 MIN BY CAR)
-  AVE–Puerta de Atocha (30 MIN BY CAR)

ACCOMMODATION

-  Eurostars Madrid Tower
-  Barceló Imagine



What's Next?

Contact:

www.nextfloor.xyz

Paseo de la Castellana, 259D, planta 18, 28046 Madrid

676 75 30 57 | info@nextfloor.xyz